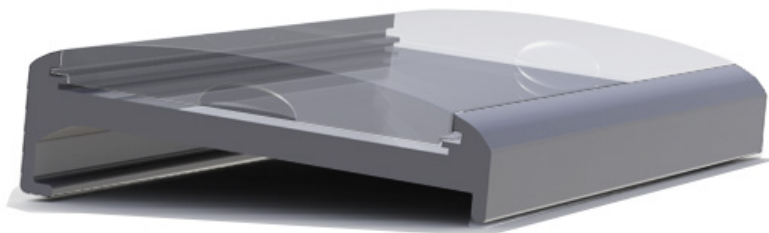


# SIGNATURE NAME PLATE

Designed with a curved profile, the Signature Name Plate by SpaceCo is modern and sleek in design.

## Overview

Designed with a curved profile, the Signature Name Plate by SpaceCo is modern and sleek in design. With two hanging profile options and three available lengths, the plate will fit a wide range of office furniture, including the SpaceBeam by SpaceCo. Each Name Plate comes with a perforated sheet to print and slide into the holder. The Signature Name Plate makes a subtle and clean addition to any workstation.



*Available in two hanging profiles and three lengths to easily affix to a wide range of office furniture.*

## Key Benefits

- Name Plate is constructed from anodized aluminum and clear acrylic to produce a sleek finish.
- Available in two hanging profiles, and three lengths.
- Velvet pads on the back prevent Signature Name Plates from scratching tool rail or other office furniture.

## Technical Overview

- Available lengths: 90mm, 150mm, and 200mm
- Construction:
  - Body - extruded aluminum
  - Lens - acrylic
  - Backing - velvet
- Finish and color:
  - Body - anodized, clear
  - Lens - polished, clear
  - Backing - velvet, black
- Packaging:
  - 90mm - 12 per box
  - 150mm - 6 per box
  - 200mm - 6 per box