

THIN CPU HOLDER

- The Thin CPU Holder lifts the CPU from the desk, and secures it. This reduces the risk of damage to the CPU while freeing valuable space on the work surface.

Overview

The Thin CPU Holder lifts the CPU from the desk, and secures it. This reduces the risk of damage to the CPU while freeing valuable space on the work surface. With integrated cable management options, the Thin CPU Holder boasts more than just spatial benefits. Furthermore, it improves user access to the CPU, making it an ergonomically efficient workspace solution. Three mounting options ensure a perfect fit for each user.

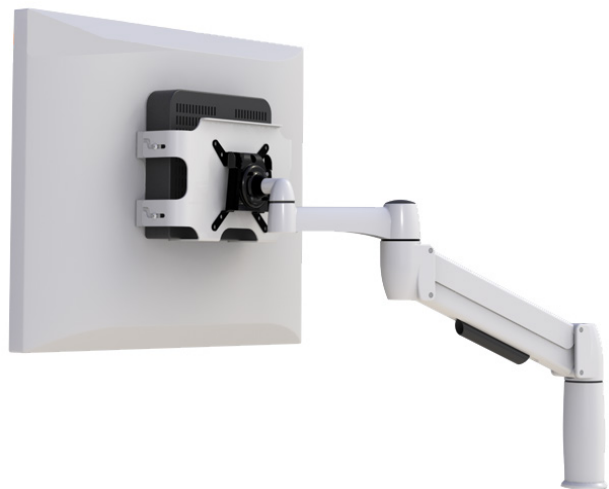
Base Mounted Thin CPU



Wall Mounted Thin CPU Holder



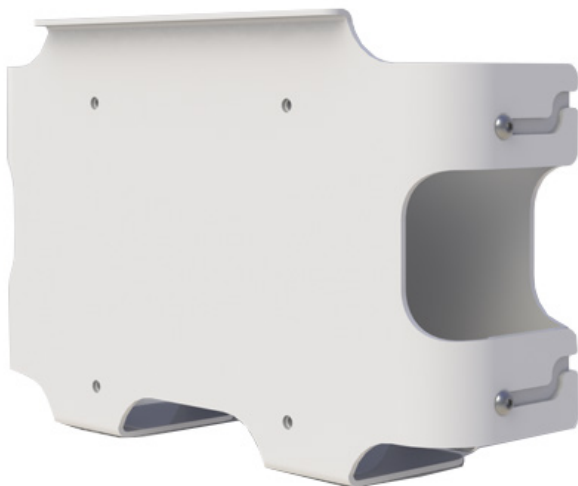
Vesa Mounted Thin CPU Holder



VESA MOUNTED THIN CPU HOLDER

Key Benefits

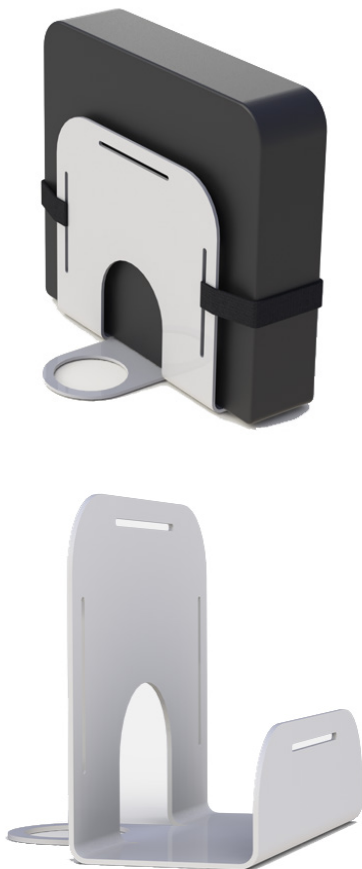
- The Vesa Mounted Thin CPU Holder is fixed between the Monitor Arm Vesa plate and the back of the monitor, freeing workspace and improving user access to the CPU.
- Cables are free to pass through the Vesa Mounted Holder via cut-outs.
- The holder fits the majority of thin CPU's due to a built-in size adjustment of 20mm.
- The Thin CPU Holder functionality separates the device into two halves: one half is affixed to the back of the monitor, the other is fixed to the Vesa plate. The halves are slotted together and fixed in position, securing the CPU.
- Manufactured in aluminum to be lightweight.



Technical Overview

- Powder coated finish in platinum, black, or white as standard. Custom color availability based on order volume.
- Thin client size: width 80-230mm / depth up to 65mm
- Adjustment: 20mm via (4x) M4 screws
- Mounting: via (8x) M4 screws
- Construction: 2mm formed aluminum sheet
- Packaging: individually wrapped, bulk packed

BASE MOUNTED THIN CPU HOLDER



Key Benefits

- The Base Mounted Thin CPU Holder is fixed between the base of the SpaceArm and the hub. This allows rotational movement, and thus, flexible positioning.
- Slots on either side allow for straps or adhesive strips to be looped around the thin CPU for extra hold.

Technical Overview

- Powder coated finish in platinum, black, or white as standard. Custom color availability based on order volume.
- Thin client size: depth up to 66mm
- Mounting: clamped between SpaceArm base and hub
- Construction: 2mm cold rolled steel
- Packaging: individually wrapped, bulk packed

BASE MOUNTED THIN CPU HOLDER



The Wall Mounted Thin CPU Holder has three available hook options, making it compatible with the majority of slat walls.

Key Benefits

- The Wall Mounted Thin CPU Holder has three available hook options, making it compatible with the majority of slat walls.
- The minimal, slim design of the Thin CPU Holder complements any office furniture.
- Slots on either side allow for straps or adhesive strips to be looped around the thin CPU for extra hold.

Technical Overview

- Powder coated finish in platinum, black, or white as standard. Custom color availability based on order volume.
- Thin client size: depth up to 66mm
- Mounting: via clips (included)
- Construction: 2mm cold rolled steel
- Packaging: individually wrapped, bulk packed

